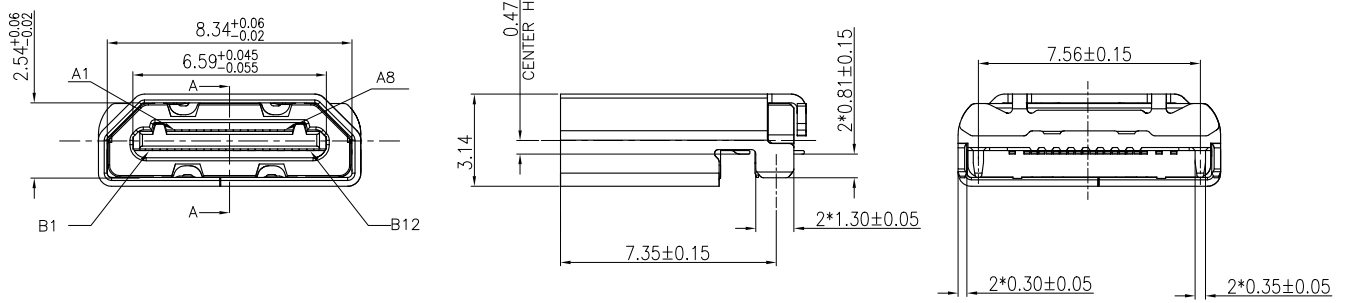
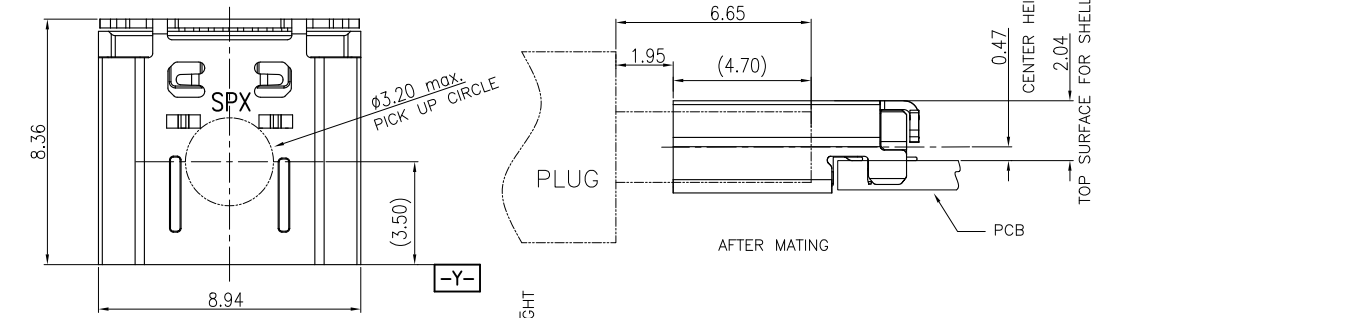


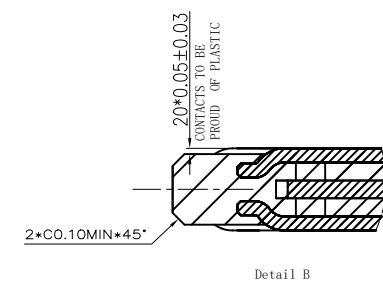
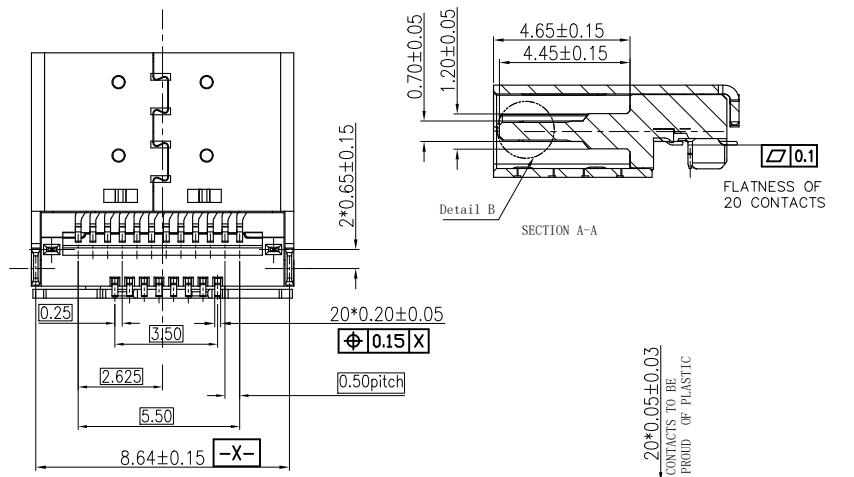
REV.	ECN.NO.	MODIFY.CONTENT	DATE
A	---	FIRST VERSION	12/16'20



SPECIFICATION:

- 1.ELECTRICAL CHARACTERISTICS:
 - 1.1 CURRENT RATING:
A current of 1.25 A shall be applied collectively to A1~A8 pins and B5~B8 pins.
 - 1.2 CONTACT RESISTANCE: INITIAL 40 mΩ Max.
AFTER 50 mΩ Max.
 - 1.3 DIELECTRIC WITHSTANDING VOLTAGE: 100 VAC r.m.s
 - 1.4 INSULATION RESISTNACE: 100 MEGOHMS MIN.
- 2.MECHANICAL CHARACTERISTICS
 - 2.1 INSERTION FORCE: 5~20N
 - 2.2 EXTRACTION FORCE: 6~20N
 - 2.3 DURABILITY:10,000CYCLES
- 3.ENVIRONMENTAL CHARACTERISTICS
 - 3.1 TEMPERATURE RANGE: -40 °C ~ 90 °C
 - 3.2 RECOMMENED PROCESS: IR REFLOW 260°C 10 SECONDS.
- 4.PART NO.:

1UBC089 E 20R1R-HF
 HF:HALOGEN FREE
 PLATING CODE:
 F:GOLD FLASH(1u'' min.)
 E:Au:5u''
 J:Au:15u''
 K:Au:30u''



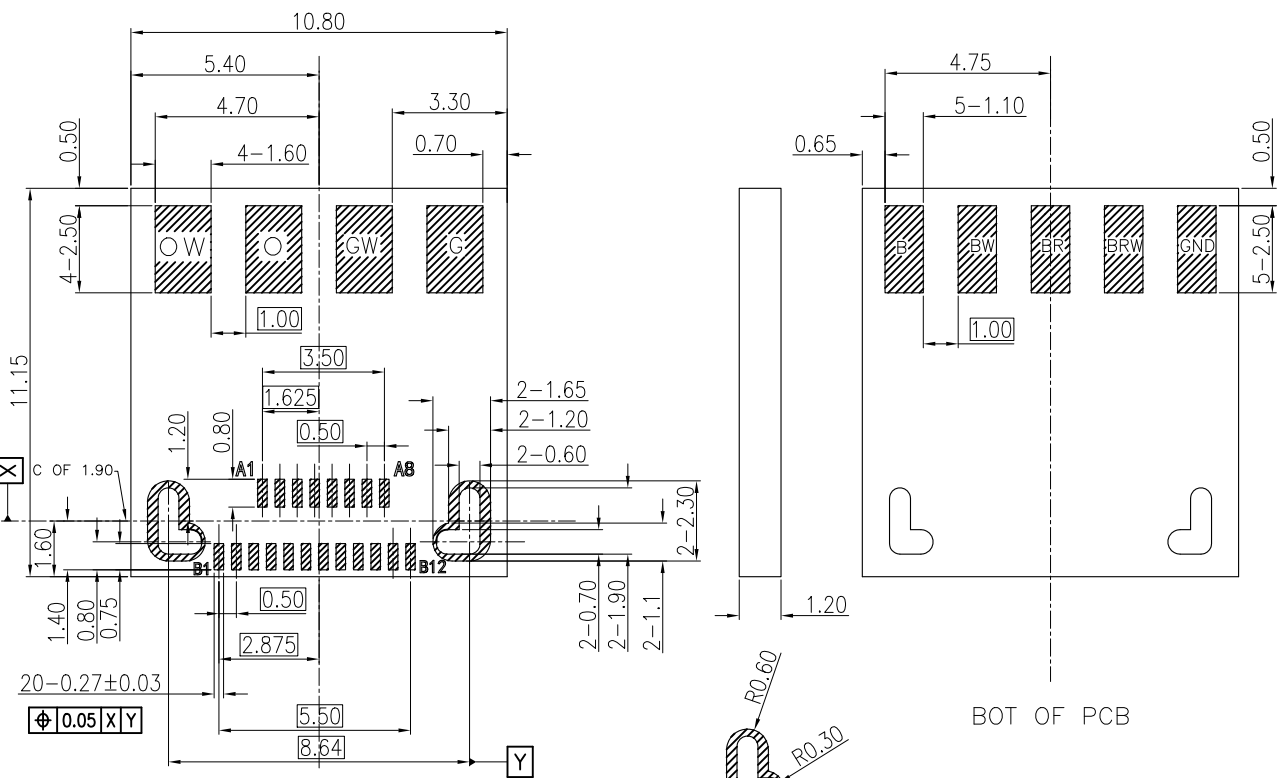
NO.	PART NAME.	QTY.	MATERIAL	FINISH
⑤	TOP CONTACT	1 SET	C18150	50u'' MIN. NI UNDER PLATING.
④	BOTTOM CONTACT	1 SET	C18150	80u''MIN.MATTE TIN PLATING ON SOLDER AREA. GOLD PLATING ON CONTACT AREA.(SEE PART MUM)
③	MID PLATE	1 PCS	SUS 301	50u'' MIN. SOLDERABLE NI PLATING OVERALL.
②	HOUSING	1 PCS	NYLON PA46	UL94V-0,BLACK.
①	SHELL	1 PCS	SUS304	Ni 30u'' MIN.

GENERAL TOLERANCE	DRAWN	SCALE	PART NO.	FINISH
X.±0.30	x.±1'	GARY.FAN 12/16'20	N/A	1UBC090E20R1R-HF
.X±0.25	.x'±0.1'	CHECKED RAY.LEE 12/16'20	UNITS	EDGE MOUNT RECEPTACLE STARLINK CONNECTOR, SPACEX
.XX±0.20		APPROVED MURRAY.LU 12/16'20	mm	
.XXX±0.10		File NO. UBC09001S		CUSTOMER DRAWING

SHEET	1/3	Q'TY	1	REV.	A
蘇州祥龍嘉業電子科技股份有限公司 Goldenconn Electronics Technology Co.,LTD					

此文件为双方检验的唯一标准
 This document is the only standard tested by both parties.

REV.	ECN.NO.	MODIFY.CONTENT	DATE
A	---	FIRST VERSION	12/16'20



- SPECIFICATION:
- ELECTRICAL CHARACTERISTICS:
 - CURRENT RATING:

A current of 1.25 A shall be applied collectively to A1~A8 pins and B5~B8 pins.
 - CONTACT RESISTANCE: INITIAL 40 mΩ Max. AFTER 50 mΩ Max.
 - DIELECTRIC WITHSTANDING VOLTAGE: 100 VAC r.m.s
 - INSULATION RESISTANCE: 100 MEGOHMS MIN.
 - MECHANICAL CHARACTERISTICS
 - INSERTION FORCE: 5~20N
 - EXTRACTION FORCE: 6~20N
 - DURABILITY: 10,000 CYCLES
 - ENVIRONMENTAL CHARACTERISTICS
 - TEMPERATURE RANGE: -40 °C ~ 90 °C
 - RECOMMENED PROCESS: IR REFLOW 260°C 10 SECONDS.
 - PART NO.:

1UBC089 E 20R1R-HF

TOP OF PCB
 RECOMMENDED PCB LAYOUT
 DEFAULT TOLERANCE ±0.05

PCB Material: FR4(IPC4101);
 PCB Thickness: 1.2mm;
 Copper Thickness: 1oz
 ALL PAD NEED ADD TIN(THICK:0.10mm)

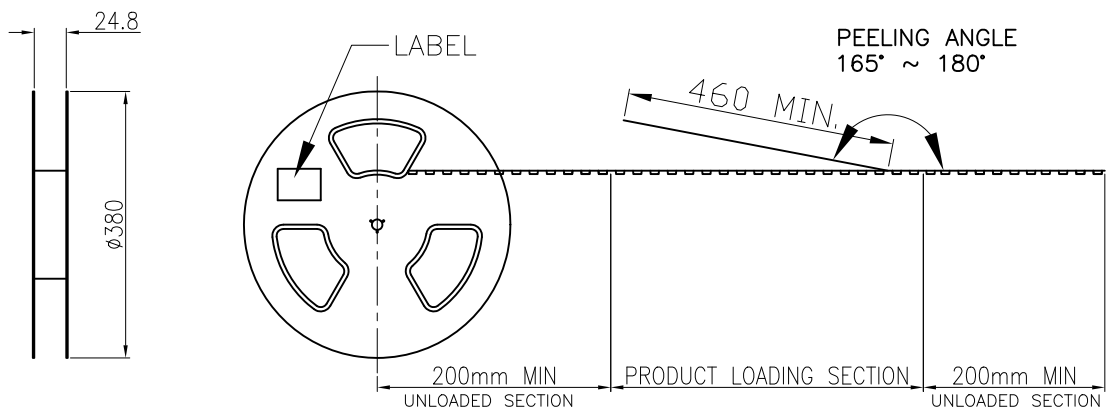
PLATING CODE:
 F:GOLD FLASH(1u" min.)
 E:Au:5u"
 J:Au:15u"
 K:Au:30u"

PIN ASSIGNMENT FOR DIRECT CONNECT APPLICATIONS											
		A1	A2	A3	A4	A5	A6	A7	A8		
		OW	OW	O	O	GW	GW	G	G		
LAN	LAN	LAN	LAN	BRW	BR	BW	B	LAN	LAN	LAN	LAN
B1	B2	B3	B4	B5	B6	B7	B8	B9	B10	B11	B12

GENERAL TOLERANCE	DRAWN	SCALE	PART NO.
X.±0.30	Gary.fan	12/16'20	1UBC090E20R1R-HF
.X±0.20	Ray.Lee	12/16'20	TITLE
.XX±0.10	Murray.Lu	12/16'20	mm
.XXX±0.05	File NO.	UBC09001S	CUSTOMER DRAWING
SHEET 2/3	Q'TY 1	REV. A	蘇州祥龍嘉業電子科技股份有限公司 Goldenconn Electronics Technology Co.,LTD

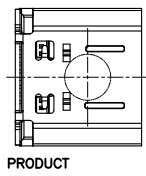
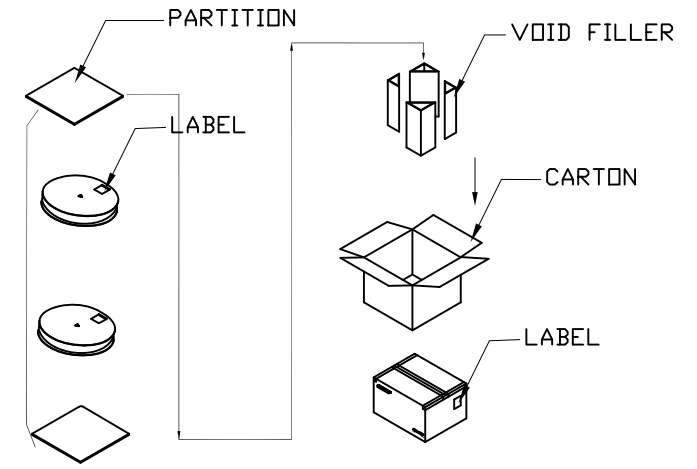
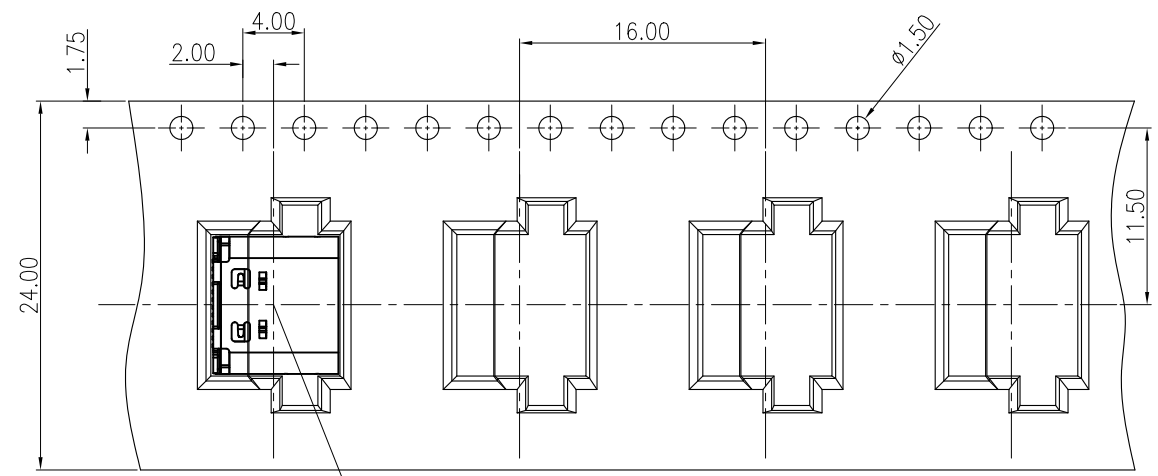
此文件为双方检验的唯一标准
 This document is the only standard for inspection by both parties

REV.	ECN.NO.	MODIFY.CONTENT	DATE
A	---	FIRST VERSION	12/16'20



- NOTES :
- MATERIAL :
COVER TAPE : P.S T=0.05mm
CARRIER TAPE : P.S T=0.40mm
CARTON: CORRUGATED FIBER
 - DIMENSION :
REEL : SEE DRAWING
SHIPPING BOX: 400X400X300mm
 - QUANTITY : SEE TABLE
 - PEELING RESISTANCE : 10gf~130gf (for 12~56mm)
 - PEELING SPEED : 300mm/MINUTES

PULL OUT DIRECTION
→



1100	9	9900
PCS/REEL	REEL/BOX	TOTAL Q'TY

GENERAL TOLERANCE		DRAWN	Gary.fan	12/16/20	SCALE	PART NO.	1UBC090E20R1R-HF
X.±0.40	x.°±1'	CHECKED	Ray.Lee	12/16/20	N/A	TITLE	EDGE MOUNT RECEPTACLE STARLINK CONNECTOR, SPACEX
.X±0.30	.x'±0.1'	APPROVED	Murray.Lu	12/16/20	UNITS	mm	CUSTOMER DRAWING
.XX±0.25		File NO.	UBC09001S				
.XXX±0.10		REV.	蘇州祥龍嘉業電子科技股份有限公司				
SHEET 3/3		Q'TY	1	A	Goldenconn Electronics Technology Co.,LTD		